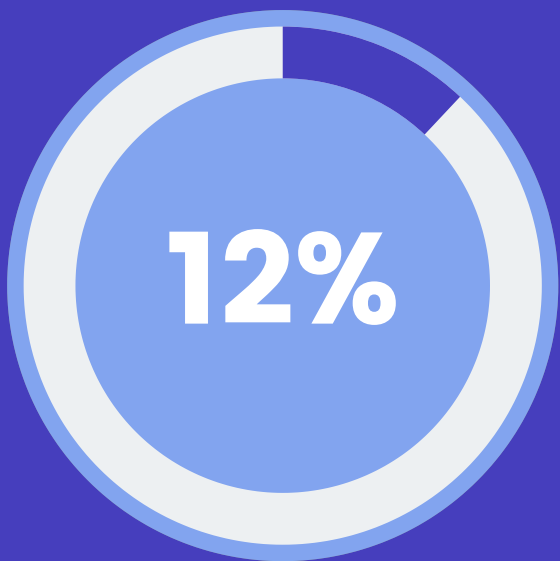


# COVID-19: Moderna and Pfizer Updates



Around 12% of LA county has been fully vaccinated. 5 million doses have been administered in the LA county including 1.2 million second doses.

Around 145.1 million doses have been administered in the US.



## Common Side Effects of Moderna and Pfizer

Headaches, fatigue, dizziness, and pain at injection site

Side effects are the same for both Moderna and Pfizer, and they usually show up one to two days after the vaccine and go away in a few days. Side effects have been reported more after the second dose and in younger adults.


## Vaccine Efficacy


Both Moderna and Pfizer have shown high efficacy in preventing symptomatic COVID-19 infection after two doses

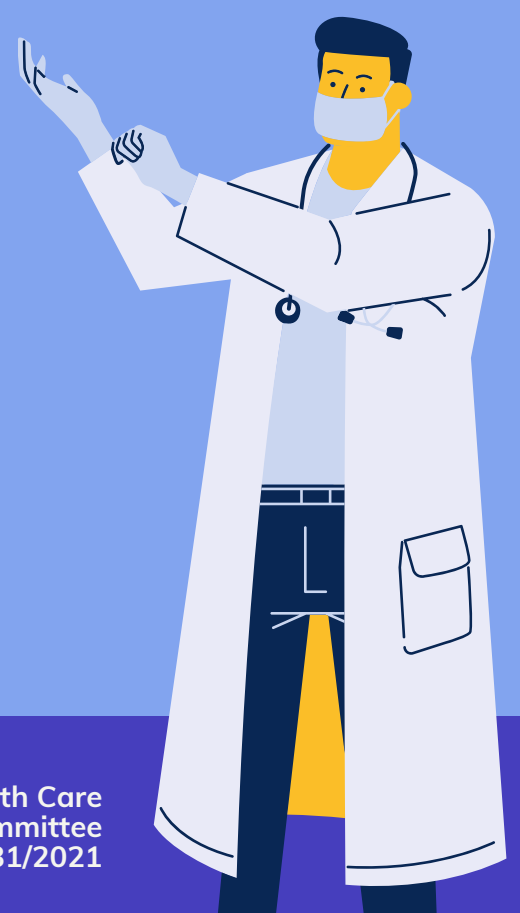
Moderna has shown 94.1% efficacy

Pfizer has shown 95% efficacy

## What are Some Other Important Updates About the Vaccine I Should Know About?

 Moderna and Pfizer are both effective against SARS-CoV-2 variants found in the UK and South Africa.

 Moderna is more effective against the U.K. variant than the South African variant, and Moderna is currently testing a new vaccine that can be used as a booster against the South African variant.



# COVID-19:

## New Companies' Vaccines



## New York Times Vaccine Tracker

Click [HERE](#) to track the progress of vaccines and coronavirus vaccine-related updates.

### Why two doses?

- multiple doses are designed to elicit stronger immune response and resulting immunity
- both doses of a vaccine are required for effective immunity
- not enough data on efficacy of single doses of vaccines designed to be a multi-step process
- full two doses were used in all clinical trials



### Should I still get a vaccine if I have had COVID-19 previously?

Yes! CDC recommends that you should still be vaccinated whether or not you have had COVID-19. Even if you have had COVID-19 before, experts are unsure how long you are protected from getting sick again.

### What does it mean for a vaccine to prevent serious diseases?

All of the currently available vaccines have shown 100% effectiveness in preventing hospitalizations and deaths. This is important because 20% of infections result in severe diseases and nearly 1% of infected people die.

### How Do the Vaccines Compare?

Company	Type	Doses	Storage	Efficacy*	Distribution
Moderna	RNA	2	-25 to -15°C 7 months	94.1%	Released
Pfizer	RNA	2	-80 to -60°C 6 months	95%	Released
Novavax	Protein-based	2	2 to 8°C	95.6%	late Spring 2021
Janssen Johnson & Johnson	Viral vector	1	2 to 8°C 3 months	72%	Released
AstraZeneca	Viral vector	2	2 to 8°C 6 months	82%	Unknown

\*efficacy against the original strain

